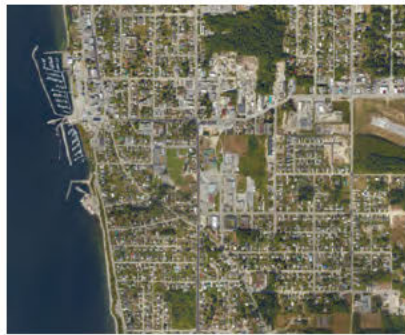
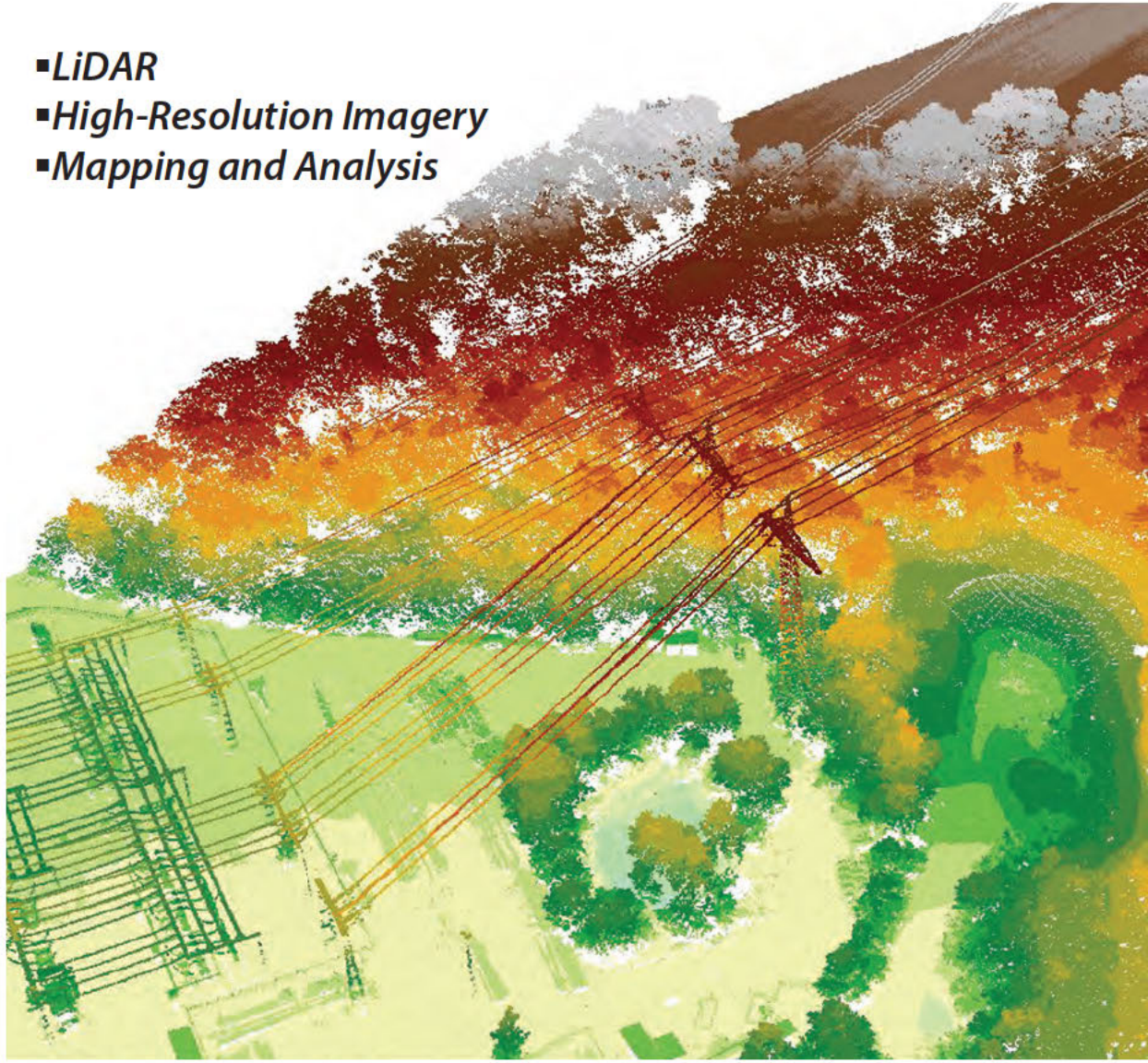


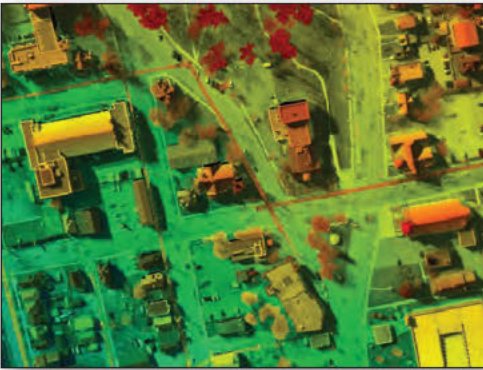
AERIAL SURVEY AND GEOMATICS

- LiDAR
- High-Resolution Imagery
- Mapping and Analysis



KBM's natural resource management professionals deliver practical innovation through a range of consulting, technical, aerial survey and geomatics services. Operating since 1974, KBM brings local knowledge and extensive experience to bear on projects in Central Canada and US.

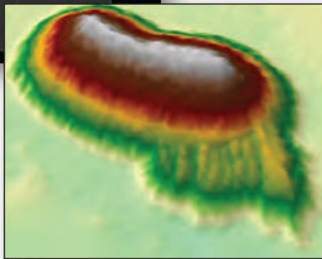
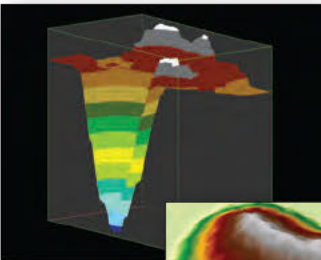
DATA CAPTURE



- High-resolution digital aerial photography
- Airborne LiDAR
- Fixed wing and helicopter platforms available
- Experienced survey pilots and operators
- Impeccable safety record



SOLUTIONS

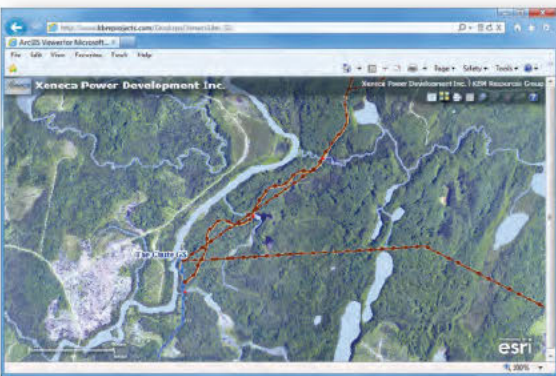
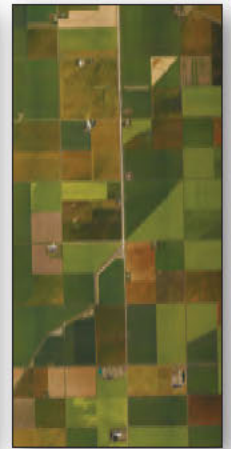


- Seamless orthoimagery
- Accurate mapping
- Elevation modeling (DTM/DEM)
- Contour generation
- Cut/Fill volumetric calculation
- Hydrological modeling
- Softcopy (3D) interpretation
- GIS integration and visualization
- Automated analysis/classification
- Change detection



APPLICATIONS

- Mining
- Corridor Mapping
 - Hydro
 - Pipelines
 - Railways
 - Roads
- Wildlife Surveys
- Emergency Response
- Municipal
- Forestry
- Agriculture
- Renewable Resources



PRODUCT DELIVERY

- On time and on budget
- Client preferred file format
- Rigorous quality control
- Interactive web-based and mobile mapping applications
- Custom cartography and large-format plotting

FEATURED CLIENTS

- Ontario Ministry of Natural Resources
- Saskpower
- Goldcorp Inc.

For more information, contact Shawn Mizon:
Tel: 807.345.5445 ext. 226 Cell: 807.476.7760 Email: smizon@kbm.on.ca