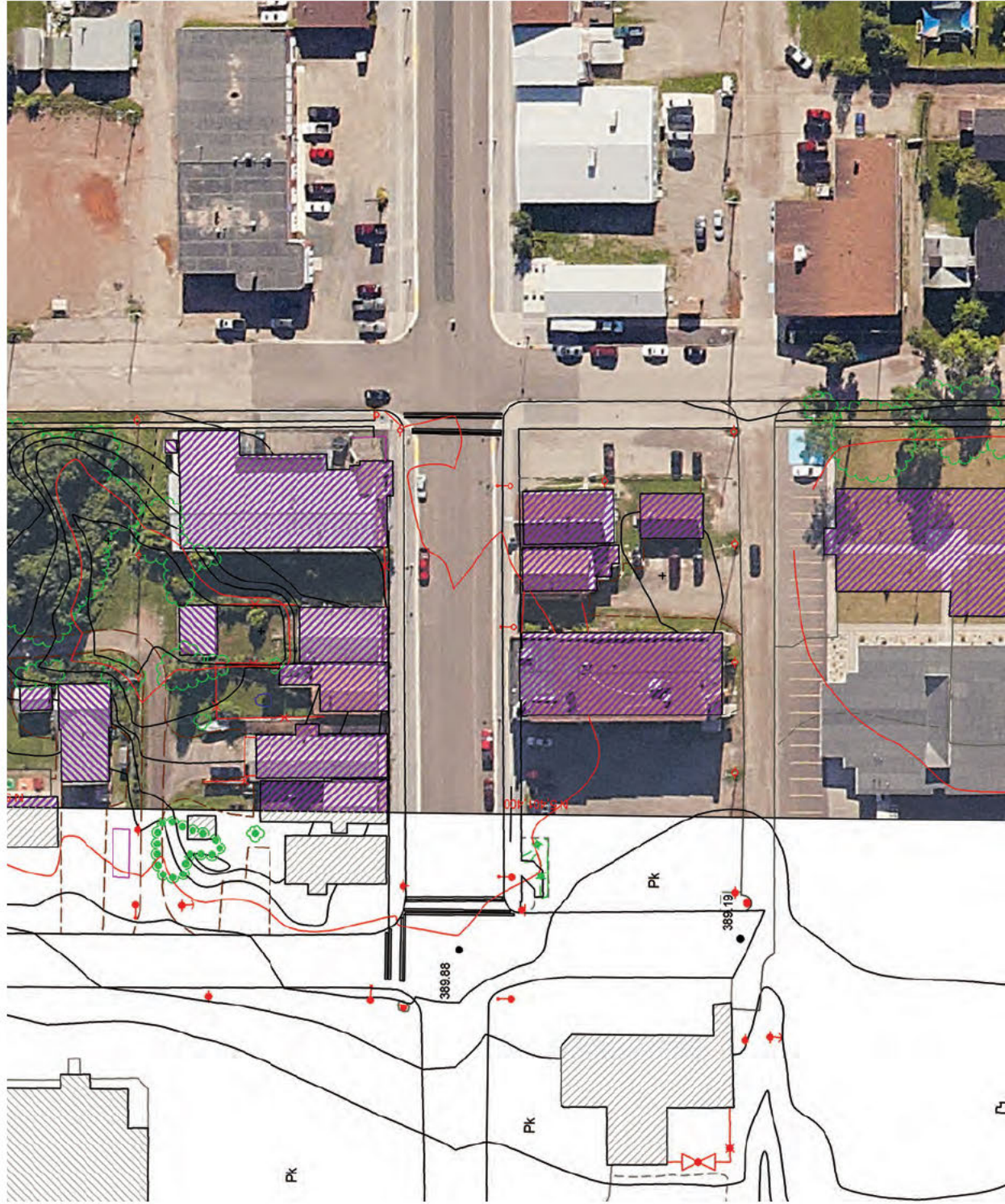


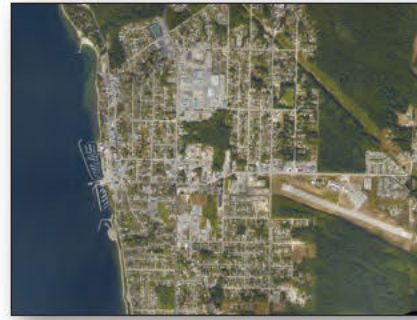
SERVICES FOR MUNICIPAL GOVERNMENTS



KBM's natural resource management professionals deliver practical innovation through a range of consulting, technical, aerial survey and geomatics services. Operating since 1974, KBM brings local knowledge and extensive experience to bear on projects in Central Canada and US.

AERIAL SURVEY AND GEOMATICS

- Airborne LiDAR and high-resolution photography
- Experienced survey pilots and operators with an impeccable safety record
- Elevation modeling and 3D feature extraction
- Seamless orthoimagery and accurate mapping
- GIS integration and visualization



COMMUNITY MAPS ONLINE

- User-friendly, interactive maps that highlight community assets and services
- Cost savings through reliance on KBM hardware, software, and/or bandwidth
- Customizable ArcGIS applications in partnership with The Omega Group (www.theomegagroup.com/) to support effective delivery of police, fire, and emergency services



RESOURCE PLANNING AND DEVELOPMENT

- Natural resource development potential and socioeconomic studies
- Natural heritage assessments and documenting of environmental attributes
- Urban forestry services such as tree inventories, mapping, and planning
- Economic, tourism, and cultural mapping as a community tool for cluster analysis, community awareness, and economic growth



ENTAC[®] PATH, ROAD, and YARD STABILIZATION

- Dust control, stockpile sealing, and prevention of road shoulder erosion
- *Eco-asphalt* - blend of ENTAC[®] and recycled aggregate - ideal for recreational trails
- Non-toxic, non-corrosive product approved by the Ontario Ministry of Environment

KBM RETAIL STORE



- Garmin GPS, survey instruments, satellite phones, and safety equipment
- SPOT satellite messenger devices that send check-in emails and rescue alerts from remote areas



FEATURED CLIENTS

- City of Winnipeg • City of Thunder Bay • Township of Nipigon •

For more information, please contact us: Tel: 807.345.5445 Email: info@kbm.on.ca