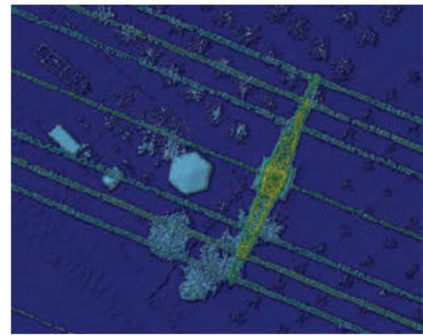


RENEWABLE ENERGY SERVICES



*KBM's natural resource management professionals deliver practical innovation through a range of consulting, technical, aerial survey and geomatics services. Operating since 1974, KBM brings local knowledge and extensive experience to bear on projects in Central Canada and US.*



## AERIAL SURVEY AND GEOMATICS

- Three dedicated aircraft based out of Thunder Bay, Ontario
- Trimble Harrier 68i advanced laser scanning and image system (LiDAR)
- True colour, high-resolution (3–50 cm) data capture and direct geo-referencing
- Certified photo interpreters and softcopy analysis
- Digital 3D and traditional mapping, including land cover classification and feature mapping
- Imagery-derived digital elevation modeling, including contours, and hydrology



## CONSULTING

- Land acquisition
- Environmental assessments and approval planning
- Permitting (e.g. roads, crossings, land-use, water taking) and site release on Crown land
- Preparation of Renewable Energy Approval reports
- Water management plan development
- Project management and navigation of government processes

## DISTRIBUTION LINE AND ACCESS ROAD PLANNING

- Routing of transmission line corridors, expedited through aerial photography analysis
- Location of roads and identification of quarry and aggregate pits
- Construction costing and permit application
- Right of way cutting and site preparation
- Monitoring and maintenance of roads, including culvert and ditch conditions



## FIELD SERVICES

- Transmission line corridors and road access ground-truthing and field layout
- Bathymetric data collection and mapping
- GPS surveying and ground control data acquisition
- Biological habitat assessments and vegetation baseline and monitoring surveys
- Natural resources inventories
- Monitoring station set-up, maintenance, and data retrieval

## COMMUNITY RELATIONS

- Stakeholder outreach and public consultation
- Land-use/site plan development
- Facilitation of initial contact and continuous dialogue with First Nations
- Values maps and traditional ecological knowledge compilation
- Formation of joint ventures and business development with First Nations

## FEATURED CLIENTS

- Saskpower • RES Group of Companies • Hydromega •

**For more information, contact Laird Van Damme:**

**Tel: 807.345.5445 ext. 232 Cell: 807.473.7226 Email: vandamme@kbgm.on.ca**