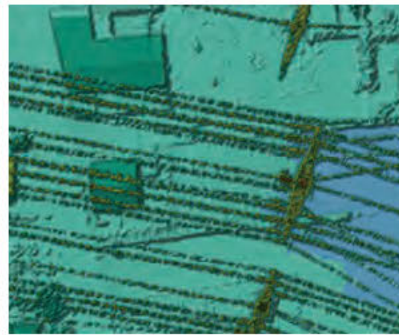
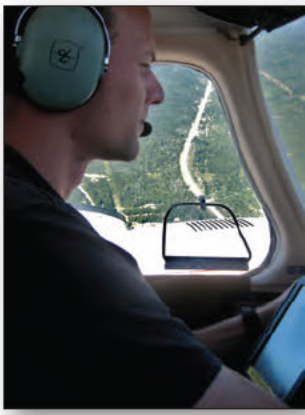


TRANSPORTATION AND UTILITIES

- *Aerial Surveys*
- *Field Services*
- *Consulting Services*

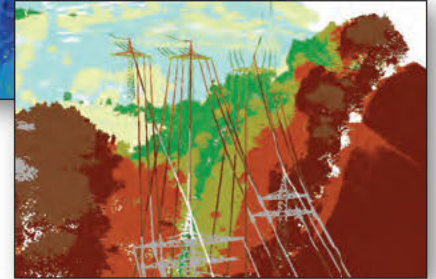
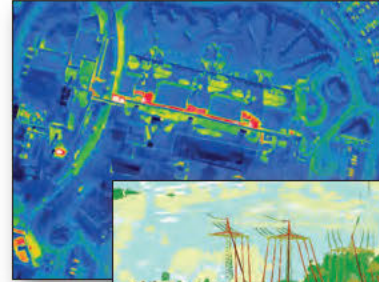


KBM's natural resource management professionals deliver practical innovation through a range of consulting, technical, aerial survey and geomatics services. Operating since 1974, KBM brings local knowledge and extensive experience to bear on projects in Central Canada and US.



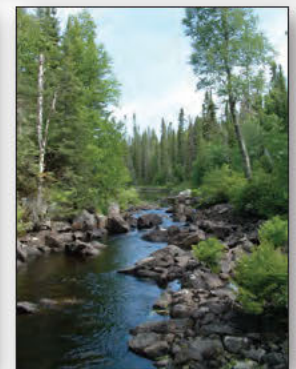
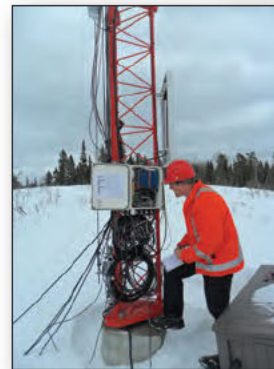
AERIAL SURVEYS

- High-resolution digital aerial photography (vertical and oblique)
- Airborne LiDAR
- Thermal imaging
- Low altitude ocular surveys
- Experienced survey pilots and operators with impeccable safety record
- Data processing



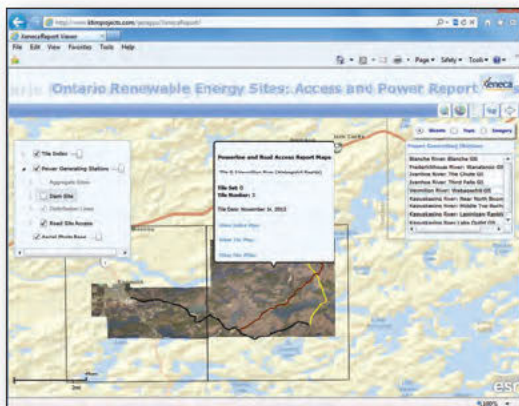
FIELD SERVICES

- Installation and management of data collection equipment
- Infrastructure inspection and monitoring
- Ground surveys; vegetation, water, soil, wildlife
- GPS mapping and ground control
- Remote access and logistics



CONSULTING SERVICES

- Seamless orthoimagery and topographic mapping
- Photo interpretation - feature measurement and mapping in support of asset management, vegetation management, habitat assessment, risk analysis
- Data integration, analysis, and visualization
- Corridor, route, and right-of-way selection (feasibility, mapping), ground-truthing, and monitoring
- Environmental assessment and permitting
- Public consultation



PRODUCT DELIVERY

- On time and on budget
- Rigorous quality control
- Interactive web-based and mobile mapping applications
- Efficient, accurate, safe, and professional

FEATURED CLIENTS

- Ontario Ministry of Transportation • Canadian National Railway Company • City of Thunder Bay •

For more information, contact Shawn Mizon:
Tel: 807.345.5445 ext. 226 Cell: 807.476.7760 Email: smizon@kbm.on.ca